



# RUSSELL SQUARE

INTERNATIONAL COLLEGE



UNIVERSITY OF LONDON  
RECOGNISED TEACHING CENTRE

Undergraduate study in Economics, Management, Finance and the Social Sciences

Academic Direction by London School of Economics and Political Science (LSE)

BSc in Business Administration (BBA)  
Academic Direction by Royal Holloway  
2 + 1 (option for 3rd year transfer at Royal Holloway, U.K.)



# Vision

To promote a quality, international educational environment that ensures all students get an opportunity to acquire the skills and knowledge that they will need to become successful global citizens and lifelong learners.

# Mission

To create, develop and enhance a high quality educational environment which will create globally competent and responsible citizens, who look at the future, learn from the past and practice in the present with a view to contribute towards a better world.

# Russell Square International College

**Russell Square International College (RSIC)**, established in August 2004 by promoters of **École Mondiale World School** is an educational institute with a difference. It nurtures future global leaders by imparting knowledge, skills, and building attitudes among students to face the world in fresh, energetic, and unrestrictive work environment. The college offers you the opportunity to face the challenges to study different ways of understanding human society, to seek solutions to problems and to question ideas!

- RSIC offers the Degree courses of the University of London in the areas of Accounting, Banking, Business, Economics, Finance, Management and Social Sciences.
- The curriculum of EMFSS is designed by The London School of Economics and Political Science (LSE) and BBA by Royal Holloway as the Member Institutions. Examinations are held every year in the month of May under the supervision of the British Council.
- We also have permission to teach the Graduate Diploma in EMFSS subjects. More information about these programmes can be found on the University of London website.
- RSIC brings to you the opportunity of getting world class education without moving away from home!

[www.rsiccollege.org](http://www.rsiccollege.org)

## Why study at Russell Square International College?

**RSIC has demonstrated a sustained commitment to high standards in respect of teaching, support and administration of University of London Degrees.**

The degrees are awarded by the University of London (UOL) and the curriculum is designed by London School of Economics and Political Science (LSE) for the EMFSS programmes, and Royal Holloway for the Business Administration programme.

The class size and the low student-teacher ratio ensures a healthy environment of encouragement and motivation which is essential for the students to enjoy this challenging programme and make it an important milestone of their career. They can fondly look back to **RSIC which adopts a student centric approach to teaching and learning by using the lecture tutorial method. With one to one guidance and mentoring during office hours, seminars and support classes, RSIC ensures that the students are able to maximize their individual potential. The student can often study a balance of quantitative and qualitative subjects**

**while pursuing their degree. She / he is challenged academically and develops a sound preparation for a successful career and further academic study and may become an independent thinker - questioning accepted truths and forming her/his own opinions.**

RSIC has an excellent infrastructure with a well-stocked library, a state-of-the-art computer lab, well-equipped class rooms, a gymnasium, a cafeteria and a swimming pool.

RSIC gives an opportunity to acquire a prestigious degree from the University of London with an international curriculum while studying in India – Member Institutions: London School of Economics & Political Science (LSE) and Royal Holloway. It is indeed a head-start towards global education but with a local flavor.

## The London School of Economics and Political Science (EMFSS Courses)

The London School of Economics and Political Science, founded in 1895 by Beatrice and Sidney Webb is one of the world's foremost centres for research and teaching in the social sciences. It is one of the UK's top academic research institutions. Sixteen Nobel Prize winners and around 30 past and present heads of state have studied at LSE.

The benefits of coming to study at LSE are obvious, but what about those students who cannot travel to London?

Since 1858, the University of London of which LSE is a 'Member Institution', has provided students from all over the world with the opportunity to benefit from LSE's expertise and study for a University of London qualification without travelling to London. These programmes are developed and assessed by LSE academics.

International students have the benefit of LSE's academic input, and the backing of the University of London, one of the oldest and largest universities in the United Kingdom. LSE contributes academic direction and support to a wide range of University of London degrees and diplomas that students can study with the aid of subject guides and other materials provided by LSE.



LSE is responsible for the academic aspects of the Programme qualifications in Economics, Management, Finance and Social Sciences, and the same rigorous research that influences LSE's teaching also shapes the materials sent to External students to guide them through their studies. LSE's academic staff take an active interest in the development of all the degrees and the diplomas offered to students, and they are scrupulous in ensuring that the standard of the examinations taken by them is the same as those studying as internal students.

Several subjects have been pioneered at LSE, including International Relations and Social Policy. Sixteen Nobel Prize winners in economics, literature and peace have been either LSE staff or alumni.

[www.lse.ac.uk](http://www.lse.ac.uk)

## Awards from University of London

As a student you register for a University of London award. The academic direction of your programme including the syllabus, assessment, learning resources and academic support is the responsibility of a particular College, or consortium of Colleges, of the University of London, known as the 'Member Institution'.

When you graduate with a degree, diploma or certificate from the University of London, you will be sent two documents - a final diploma (i.e. the parchment you receive following graduation) and a Diploma Supplement.

The final diploma will indicate that you were registered with the University of London and awarded a University of London degree, diploma or certificate, and give the name of the Member Institution which conducted the examinations. The University of London logo and signature of the Vice-Chancellor of the University of London are incorporated. The Diploma Supplement will describe the nature, level and content of the programme you successfully completed and include a transcript of courses taken and marks achieved, as well as the overall classification. It also provides further information about the role of the Member Institution and method of study. It confirms that there is no difference between the standards of awards whether they are obtained through a Recognised Teaching Centre or face-to-face at a College of the University of London.






The University of London logo and signature of the Vice-Chancellor of the University of London are incorporated. The Diploma Supplement will describe the nature, level and content of the programme you successfully completed and include a transcript of courses taken and marks achieved, as well as the overall classification. It also provides further information about the role of the Member Institution and method of study. It confirms that there is no difference between the standards of awards whether they are obtained through a Recognised Teaching Centre or face-to-face at a College of the University of London.



# Admission Eligibility for EMFSS (under the academic direction of LSE)

Eligibility	Degree Route	CHESS
<b>Minimum Age</b>	Normally at least 17 years in the year of registration	18 years on 31st December in year of registration

## Entrance Requirements

<b>IB DIPLOMA</b>	Successfully pass IB DIPLOMA, Maths can be passed a grade 3 – 7 at either higher or standard level (excluding Maths & Economics)	IB Certificate - should have equivalent of 6 O L Passes including Maths and English. Eg..passes at S L /H L with points 3 or above including Maths.
<b>'A' LEVELS</b>	Two subjects at GCE 'A' level, plus at least three further subjects at GCSE/GCE 'O' level at Grade C or above. OR Three subjects at GCE 'A' level and one further subject at GCSE/GCE 'O' level at Grade C or above. OR Two subjects at GCE 'A' level, plus two further subjects at GCE 'AS' level and all applicants must demonstrate competence in Mathematics at least equivalent to GCSE/ GCE 'O' level at Grade C. (excluding Mathematics & Economics)	<ul style="list-style-type: none"> <li>• One GCE/A level (or equivalent) and 4 GCSE/O levels, including Mathematics at Grade A - C.</li> </ul> OR <ul style="list-style-type: none"> <li>• Six GCSE/O levels (or equivalent) including Mathematics at Grade A - C.</li> </ul> Maths requirements: GCSE/O level Mathematics with a grade C or above or equivalent.
<b>Indian Boards (CBSE or CISC or NIOS )</b>	Pass Year XII, All India Boards or Recognised Year XII State Board - 4 Acceptable Academic subjects each passed at 70% or above. OR An overall average of 70% from all subjects at Year XII. All applicants must pass Year XII Mathematics and English at 50% or above. If Year XII Mathematics is not passed at 50% or above then Year X Maths can be considered.	
<b>India State Board Eg. - HSC</b>	Recognised year XII State Board: 4 subjects each passed at 70% or above OR An overall average of 70% from all subjects taken at year XII satisfies the entrance requirements for degrees in Economics, Finance, Management and the Social Sciences programmes only. If Mathematics is not passed at 70% or above then in addition Mathematics at year XII must be passed at 50% or above. Furthermore, if year XII schooling is not taught in the medium of English then applicants require an acceptable Test of Proficiency in English which has been passed at the required grade within the past 3 years.	 

# Summer School

LSE Summer School offers over 80 three-week courses taught by LSE's world-renowned faculty. All courses take place on the campus in the heart of Central London. The LSE Summer School has the world's largest intake of International study abroad undergraduates compared with other summer schools across the globe. Visiting students are often able to transfer credit from LSE's rigorously assessed summer courses towards degrees at their home institution.

The Summer School curriculum is drawn from across the university, with courses being offered in subjects as diverse as Accounting, Finance, Economics, International Relations, Law, and Business and Management. LSE Summer School courses are full-time, intensive programmes, and consist of at least 54 contact hours over the three-week period, generally taking the form of 36 hours of lectures and 18 hours of tutorial or seminar-based classes. EMFSS students benefit from a 15% discount on tuition fees. If you complete two Summer School courses, you may gain APL for one 100 level course within your degree.

## Study abroad in London at the world's leading Institution

### THE LONDON SCHOOL OF ECONOMICS AND POLITICAL SCIENCE ■

LSE's year-long study abroad Programme is called **The General Course**. It is a fully integrated year of undergraduate study in one of the most vibrant, diverse and historical cities in the world.

Students studying at RSIC undertaking a degree through the University of London with LSE as the Member Institution are eligible for entry to The General Course after just one year of study. RSIC offers complete support to such academically inclined students to study for a year at LSE. Study at LSE contributes directly to the award of the University of London degree.



### Why choose the General Course

- ✓ **The world's leading dedicated social science institution**  
LSE consistently receives the highest ratings available for the quality of its teaching and research.
- ✓ **Scholarships worth £15,000 each**  
All accepted students are eligible for one of three John C Phelan General Course Scholarships, worth £15,000 each.
- ✓ **Over 250 courses to choose from**  
Covering all the main social science disciplines and taught alongside degree seeking students in a mixture of lectures and small discussion groups.
- ✓ **Global reputation for excellence**  
Graduate schools and employers around the world will recognize and respect the LSE name on your CV. You will also be a part of an impressive global alumni network ensuring you maintain a life-long connection with the school.
- ✓ **Teaching delivered by leading academics**  
LSE's academics are at the cutting edge of the social sciences, influencing opinion and helping shape society.
- ✓ **International and cosmopolitan environment**  
LSE students are drawn from over 150 different countries and 65% of all those at the School come from outside the UK. 40% of the academic staff originate from outside the UK.
- ✓ **Central London location**  
The School is on the doorstep of the City of London, Westminster and Covent Garden, providing great social and academic resources.
- ✓ **Guaranteed university accommodation**  
All students offered a place on the General Course are guaranteed University housing.
- ✓ **Work in London**  
Automatic entitlement to work on or off campus both in term time and during vacations.
- ✓ **Studying abroad is a life-changing experience**  
Studying abroad, for any period of time is a highly rewarding experience. Students returning from a study abroad program describe their experience as "life-changing".

# BSc Accounting and Finance

## Programme overview

### Programme overview

Accounting and Finance involve much more than just computational skill. Both subjects prepare you to perceive and understand the nature of organisations. They also give you an understanding of how the market allocates finance to firms.

### What it prepares you for

- You are professionally qualified in the accountancy field and would now like to take a degree.
- You have not yet decided which profession to pursue and are interested in the field of accounting and finance.
- You wish to go on to take professional accountancy qualifications. Graduates of this degree have gone on to work in areas of Professional Accountancy, Investment Banking, Investment Analysis and Management, Management Consultancy and Financial Management, as well as to more advanced academic study.

## Programme specifics

- This degree provides thorough grounding in accounting and finance within a strong social science framework.
- The degree has an international flavour and was developed in consultation with academics and professionals throughout Southeast Asia, as well as UK.
- The subject guides are written by internationally acknowledged leaders in both academic research and in professional accountancy and the financial markets.
- Graduates in Accounting and Finance work in areas of Professional Accountancy, Investment Banking, Investment Analysis and Management, Management Consultancy and Financial Management.

## Gaurav Agarwal - BSc Accounting and Finance

The BSc in Accounting & Finance is one of the most professionally-oriented undergraduate qualifications. It is ideal if a student wants to join an accountancy firm or pursue a career in investments, insurance, banking, or financial analysis and management. The course is widely recognised as one of the best foundations for a career in finance that one can get.

The course structure is highly focused, with a special emphasis on accounting and financial management as well as giving you a firm grounding in economics, organisational behavior, and quantitative methods. If becoming an accountant is your goal, you can choose modules which may lead to exemptions from the examinations of major accountancy bodies, a real advantage when it comes to finding a job.



The course aims to provide you with the ability to apply critical analysis and reflection to individual problem areas and integratively across disciplinary boundaries. Thus it is a highly recommended course. 'The sense of fulfilment I got when I know I tried my best and my efforts were paid off at the end of each academic year made it all worthwhile. Thank you

## Standard Route

### 100 Courses

- 1 ▲ [EC1002 Introduction to economics](#)
- 2 [MT105A Mathematics 1](#) (half course) and [ST104A Statistics 1](#) (half course)
- 3 [FN1024 Principles of banking & finance](#)
- 4 [AC1025 Principles of accounting](#)

### 200 and 300 Courses

- 5 [MN2028 Managerial economics](#) (EC1002) + ([MT105A](#) or [MT1174](#) or [MT1186](#)) or [EC2066 Microeconomics](#) (EC1002) + ([MT105A](#) or [MT1174](#) or [MT1186](#))
- 6 [AC2091 Financial reporting](#) (AC1025)
- 7 [AC2097 Management accounting](#) (AC1025)
- 8 [AC3059 Financial management](#) (AC1025) or [FN2190 Asset pricing and financial markets](#) (EC1002) + ([MT105A](#) or [MT105B](#) or [MT1174](#) or [MT1186](#))
- 9 [AC3093 Auditing and assurance](#) (AC1025)
- 10 [AC3193 Accounting theory](#) (AC2091) + (AC2097)
- 11 One 200 or 300 course (or two half courses) chosen from any [Selection group](#)
- 12 ♦ One 100, 200 or 300 course (or two half courses) chosen from any [Selection group](#)



## Notes

- Unit Number at the Head of Unit Name
- Prerequisite in the bracket
- Final selection of the options offered is at the discretion of the college



# BSc Banking and Finance

## Programme overview

Studies in Banking and Finance aims to provide you with an understanding of the ways in which financial intermediaries and institutions operate and the structure and functioning of financial markets. You gain understanding of the pricing of financial assets, and why and how corporations issue various types of assets. The banking units provide precise information on intermediary operations, both on a domestic level and international level.

You also learn how banks (and other financial institutions) use financial assets like derivatives in their risk management procedures.

### What it prepares you for?

- This degree may suit you if you want to pursue a career in Accountancy, Consulting, Commercial or Investment Banking, Trading and Sales or Risk Management.

## Programme specifics

- The Degree has its foundations in Quantitative, Economic, Accounting and Finance subjects.
- Further, it has compulsory units in Finance, Banking and Risk Management. These units form the core of the programme.
- This degree prepares you for a career in Accountancy, Consulting, Commercial or Investment Banking, Trading and Sales or Risk Management.



## Rishi Dinodiya - BSc Banking and Finance

The final year of my degree coincided with one of the most seesawed years in the financial world. A year in which tiny companies rose to the position of multinationals on the one hand but mighty corporates were shuttered down on the other. The sudden rise and fall in the world of money increased my fascination with the subject. For the reason that my education and the real world events moved in parallel my interest in the subject never dithered once it had captured my attention.

For people who are interested in choosing Banking & Finance as their subject I would greatly recommend it for those who see themselves in Finance in the long run. The degree is also a great option for people who are in between two boats at the start of their semesters as the subject has a fair amount of generality to it. The structure of the degree is fairly well set so that one doesn't feel too burdened if the required readings are done well in time. This well concocted structure enables the students to intake oceans of knowledge all within a relatively short period of time.



## Standard Route

### 100 Courses

- 1 ▲ [EC1002 Introduction to economics](#)
- 2 ST104A Statistics 1 (half course) and MT105A Mathematics 1 (half course) or ▲ ST104B Statistics 2 <sup>1</sup> (half course)
- 3 [FN1024 Principles of banking and finance](#)
- 4 [AC1025 Principles of accounting](#)

### 200 and 300 Courses

- 5 FN2190 Asset pricing and financial markets (EC1002) + (MT105A or MT105B or MT1174 or MT1186)
- 6 FN2191 Principles of corporate finance (EC1002) + (MT105A or MT105B or MT1174 or MT1186)  
One course chosen from:
  - 7 EC2020 Elements of econometrics (EC1002) + (ST104A) + (MT105A or MT1174 or MT1186)
  - EC2065 Macroeconomics (EC1002) + (MT105A or MT1174 or MT1186)
  - EC2066 Microeconomics (EC1002) + (MT105A or MT1174 or MT1186)
- 8 FN2029 Financial intermediation (FN1024)
- 9 ▲ FN3023 Investment management (FN1024)
- 10 One 300 course from Selection groups [A](#) or [B](#)
- 11 One 300 course (or two half courses) from any [Selection group](#)
- 12 ▲ One 100, 200 or 300 course (or two half courses) from any [Selection group](#)



\* FN3023 Investment management must be taken with or after FN3092 Corporate finance

### Notes

- Unit Number at the Head of Unit Name
- Prerequisite in the bracket
- Final selection of the options offered is at the discretion of the college

# BSc Business and Management

## Programme overview

The programme builds foundations for competitive business ventures. The units of the Course draw their core subjects from business practices, consultancy and research. The degree is designed to develop excellent analytical skills, which are invaluable to a decision-making role in management and also for undertaking further studies. It helps you gain knowledge in areas of Management Consultancy, Banking, Accountancy and General Management.

### What it prepares you for?

- You wish to work in the areas of Management Consultancy, Banking, Accountancy and General Management
- You are currently working as manager and would like to develop your professional skills and knowledge.
- You are already working within a business and wish to progress to management level.
- You have not yet decided which profession to pursue and are interested in the business sector, the management profession or perhaps in starting your own business.
- You would like to know the Past, Present and Future scenario of the business world.

## Programme specifics

- The degree prepares you for the demanding and highly competitive world of business.
- This degree provides a solid understanding of the different functional areas of business.
- It equips you to start your own business, or provide managerial services to an already existing one.
- The social science emphasis allows you to develop thorough appreciation of managerial and business concepts within a wider environment.

## Akshay Hariharan - BSc Business

Studying at the RSIC involved hard work and commitment, but was an incredibly fun four years! I found there to be a great rapport between students and staff, who were always encouraging and supportive of new ideas. The interactive class structures enable students to learn from one another and to develop invaluable organizational, teamwork and leadership skills. Lecturers also introduce students to the business world outside the classroom through the BSc Business

I developed a keen interest in business while completing this study with the UOL programme. I attribute my initial interest in this field to the manner in which our teacher was able to challenge the class on a daily basis. Because of the course structure and the ability of our teacher to keep our interest by keeping us 'on our toes' I felt I have in me to be a success. " If you have the will, RSIC has the way!"

The BSc Business is something I would recommend as it provides a well-rounded balanced education, which opens up doorways to many universities. Studying for the programme I have cultivated good study habits and also further enriched my attitudes towards academic achievement which compel me towards attaining higher goals."



## Standard Route

### 100 Courses

- 1 ▲ [EC1002 Introduction to economics](#)<sup>1</sup>
- 2 [MT105A Mathematics 1](#) (half course) and [ST104A Statistics 1](#) (half course)
- 3 [AC1025 Principles of accounting](#)
- 4 [MN1178 Business and management in a global context](#)<sup>1</sup>

### 200 Courses

- 5 [MN2177 Core management concepts](#) (MN1178)
- 6 7 8 9 *FOUR courses chosen from*<sup>2</sup>:  
[FN2190 Asset pricing and financial markets](#)<sup>3</sup> (EC1002) + (MT105A or MT105B or MT1174 or MT1186) or  
[AC3059 Financial management](#) (AC1025)  
[FN2191 Principles of corporate finance](#) (EC1002) + (MT105A or MT105B or MT1174 or MT1186)  
[MN2028 Managerial economics](#) (EC1002) + (MT105A or MT1174 or MT1186)  
[MN2032 Management science methods](#) (ST104A) + (MT105A or MT1174 or MT1186)  
[MN3075 Human resource management](#) (MN1178)<sup>4</sup>  
[MN3119 Strategy](#) (EC1002) + (MT105A or MT1174 or MT1186)  
[MN3127 Organisation theory: an interdisciplinary approach](#) (MN1178)<sup>4</sup>  
[MN3141 Principles of marketing](#) (MN1178)<sup>4</sup>
- 10 One 200 or 300 course from [Selection group M](#)
- 11 One 300 course from [Selection group M](#)
- 12 ♦ One 100, 200 or 300 course (or two half courses) from any [Selection group](#)



### Notes

- Unit Number at the Head of Unit Name
- Prerequisite in the bracket
- Final selection of the options offered is at the discretion of the college

# BSc Economics

## Programme overview

The Degree builds on a foundation of economic theory along with the statistics and analytics. Depending on your choice of units, the study of economics gives you greater understanding into the areas of public economics, international trade or economic development, and of the broader behavior of economies.

The combination of subjects offers with verbal reasoning and mathematical and quantitative analysis provides an excellent foundation for a career as an economist in the field of finance, in a government institution or as a part of an international organisations.

Where can it lead?

Because of its combination of verbal reasoning, mathematical and quantitative analysis, the degree is an excellent foundation not only for employment as an economist in industry, finance, government or international organizations, but also for a range of other careers where these skills are valued.

## Programme specifics

- Develops a thorough understanding of the logical analysis approaches of social and individual decision making and the overall approach for analysing a whole range of problems, often belonging outside of the conventional domain of economics.
- Provides special benefits from the wide knowledge and experience of the LSE Department of Economics, ranked number one outside the USA for its published research.
- The study of Economic problems range from the saving capacity of a household and their choice of goods to be purchased to the interactions between all households and businesses in the country that determine the national output, the balance of payments, inflation and unemployment.



## Saloni Shah - BSc Economics

BSc Economics was a natural choice for an economics major like me. I found a brilliant combination of mathematics and economics which was useful in the academic world and the real world. Having completed this process now, I look back on my textbooks with sheer

fondness and nostalgia for having spent sleepless nights battling concepts which I never thought any sane person would ever use. But as I now stand to begin my masters course, I thank my gods for having met these principles so early on in life and having a grip on them. For this I thank each and every one of my teacher who strived so hard and believed in my ability when I doubted my self. This degree I recommend to students with a good math base and the perseverance to never give up!



## Standard Route

### 100 Courses

- 1 ▲ [EC1002 Introduction to economics](#)
- 2 [ST104A Statistics 1](#) (half course) and ▲ [ST104B Statistics 2](#) (half course)
- 3 [MT105A Mathematics 1](#) (half course) and ▲ [MT105B Mathematics 2](#) (half course) or [MT1186 Mathematical methods](#)
- 4 ♦ One course (or two half courses) from Selection groups [F1](#) or [F2](#)

### 200 and 300 Courses

- 5 ▲ [EC2020 Elements of econometrics](#)<sup>2</sup> (EC1002) + (ST104A) + (MT105A or MT1174 or MT1186)
- 6 [EC2065 Macroeconomics](#) (EC1002) + (MT105A or MT1174 or MT1186)
- 7 [EC2066 Microeconomics](#) (EC1002) + (MT105A or MT1174 or MT1186)
- 8 9 10 *THREE courses chosen from*<sup>3</sup>:  
EC3015 Economics of labour  
EC3016 International economics  
EC3022 Public economics  
EC3044 Economics of development  
EC3099 Industrial economics  
EC3115 Monetary economics  
EC3120 Mathematical economics
- 11 One 200 or 300 course from any [Selection group](#)
- 12 ♦ One 100, 200 or 300 course (or two half courses) from any [Selection group](#)



\*ST104B Statistics 2 must be taken with or after ST104A Statistics 1

\*\*MT105B Mathematics 2 must be taken with or after MT105A Mathematics 1

### Notes

- Unit Number at the Head of Unit Name
- Prerequisite in the bracket
- Final selection of the options offered is at the discretion of the college

# BSc Economics and Finance

## Programme overview

BSc. Economics & Finance has been designed to provide the economic reasoning, quantitative skills and institutional knowledge to students that is specifically required by financial economists to solve practical financial challenges that arise everyday.

The combination of economic reasoning with mathematical and related quantitative skills is best suited for students interested in Financial Consultancy, General Management or Accountancy.

### Where can it lead?

A career as a financial economist, whether in Government or Finance (Investment or Commercial Banking, Risk Management, Research, Fund Management or Securities Trading).

The combination of economic reasoning and mathematical and other quantitative skills acquired should suit those interested in a career in Consultancy, General Management or Accountancy.

It also provides a sound basis for the further academic study.

## Programme specifics

- A thorough programme based on Quantitative, Economics and Finance subjects.
- Optional units available in Economics and Finance as well as in related areas such as accounting for students pursuing standard route.
- Designed to develop excellent analytical skills useful to build a career as a financial economist, whether in Government or Finance (Investment or Commercial Banking, Risk Management, Research, Fund Management or Securities Trading).



## Akanksha Mehra - BSc Economics and Finance (World's Highest Scorer in Quantitative Finance in 2007-2008)

The BSc Economics and Finance degree was very rigorous. It helped me acquire a thorough grounding in both Economics and Finance. The degree covered a wide range of subjects both theoretical as well as quantitative. It not only helped me gain a theoretical perspective but also helped me enhance my analytical and quantitative reasoning skills. The degree has a significant quantitative component as it includes subjects such as Mathematics, Statistics, Econometrics and

Quantitative finance. The other subjects in the degree also require the application of quantitative and critical reasoning skills. The exceptional teaching and world class resources at RSIC were tremendously instrumental in helping me achieve good grades throughout this course. Studying for this degree has helped me immensely as I have been able to apply the knowledge and skills I gained from it to the MSc Finance programme I am currently pursuing at Imperial College London.



## Standard Route

### 100 Courses

- 1 ▲ [EC1002 Introduction to economics](#)
- 2 [ST104A Statistics 1](#) (half course) and ▲ [ST104B Statistics 2](#) (half course)
- 3 [MT105A Mathematics 1](#) (half course) and ▲ [MT105B Mathematics 2](#) (half course) or [MT1186 Mathematical methods](#)
- 4 One course (or two half courses) from Selection groups [F1](#) or [F2](#)

### 200 and 300 Courses

- 5 [EC2065 Macroeconomics](#) (EC1002) + ([MT105A](#) or [MT1174](#) or [MT 1186](#))
- 6 [EC2066 Microeconomics](#) (EC1002) + ([MT105A](#) or [MT1174](#) or [MT 1186](#))
- 7 ▲ [EC2020 Elements of econometrics](#) (EC1002) + ([ST104A](#)) + ([MT105A](#) or [MT1174](#) or [MT 1186](#))
- 8 [FN2190 Asset pricing and financial markets](#) (EC1002) + ([MT105A](#) or [MT105B](#) or [MT1174](#) or [MT1186](#))
- 9 [FN2191 Principles of corporate finance](#) (EC1002) + ([MT105A](#) or [MT105B](#) or [MT1174](#) or [MT1186](#))
- 10 [EC3115 Monetary economics](#) (EC2065) or [EC3099 Industrial economics](#) (EC2066 or [MN3028](#))
- 11 ▲ [FN3142 Quantitative finance](#) (EC2020 + EC2066)
- 12 ♦ One 200 or 300 course (or two half courses) from any [Selection group](#)



\*[FN3142 Quantitative finance](#) must be taken with or after [FN3092 Corporate finance](#)

### Notes

- Unit Number at the Head of Unit Name
- Prerequisite in the bracket
- Final selection of the options offered is at the discretion of the college

# BSc Economics and Management

## Programme overview

The Degree combines an in-depth study of Economics with Management options that give you analytical perspective for managerial and business issues. You obtain a general knowledge of core disciplines that underlie the theory and practice of management and corporate disciplines, whilst still specialising in Economics.

### What it prepares you for?

- Obtain a general education in those disciplines that underlie the theory and practice of management, whilst still specializing in Economics.
- If you are interested in general management or if you want to pursue further training in management and corporate disciplines.

## Programme specifics

- The Degree combines an in-depth study of Economics with Management options that give you analytical perspective for managerial and business issues. You obtain a general knowledge of core disciplines that underlie the theory and practice of management and corporate disciplines, whilst still specialising in Economics.
- This Degree has a strong emphasis on Social Science theory and practice.
- It gives you thorough knowledge and understanding of a range of issues in international management and economics.
- Graduates in the field can pursue a career in finance that requires a high level of logical and quantitative reasoning, such as Accountancy, Banking and General Management & Economics and Management.



## Apeksha Vora - BSc Economics and Management

Obtaining the University of London Degree has been the most challenging and valuable experience of my academic life.

Over and above this degree also lets you choose 4 subjects on your own. BSc Economics and Management is the most flexible degree when it comes to choosing the subjects. Unlike any other degree like BSc Economics or BSc Business which restrict a lot of selection to either the 'E' group or the M group of subjects, BSc Economics and Management give you the option of choosing a lot of your subjects from random groups. Through the course of my degree I discovered that I had an interest for Sociology, Political Theory and Development Studies and I was able to take up subjects that fit in with my interests because of the flexibility of the degree. In conclusion I would suggest the BSc Economics & Management to anyone who is interested in both as well as those who are yet unsure about what they want to do further, because of the flexibility of the course.



## Standard Route

### 100 Courses

- 1 ▲ [EC1002 Introduction to economics](#)
- 2 [MT105A Mathematics 1](#) (half course) and [ST104A Statistics 1](#) (half course)
- 3 [AC1025 Principles of accounting](#)
- 4 [MN1178 Business and management in a global context](#)

### 200 and 300 Courses

- 5 [MN2177 Core management concepts](#) (MN1178)
- 6 [MN2028 Managerial economics](#) (EC1002) + (MT105A or MT1174 or MT1186) or [EC2066 Microeconomics](#) (EC1002) + (MT105A or MT1174 or MT1186)
- 7 [EC2065 Macroeconomics](#) (EC1002) + (MT105A or MT1174 or MT1186)
- 8 *One course chosen from <sup>2</sup>:*  
[FN2190 Asset pricing and financial markets<sup>3</sup>](#) (EC1002) + (MT105A or MT105B or MT1174 or MT1186)  
or [AC3059 Financial management](#) (AC1025)  
[FN2191 Principles of corporate finance](#) (EC1002) + (MT105A or MT105B or MT1174 or MT1186)  
[MN2032 Management science methods](#) (ST104A) + (MT105A or MT1174 or MT1186)  
[MN3075 Human resource management](#) (MN1178)<sup>4</sup>  
[MN3119 Strategy](#) (EC1002) + (MT105A or MT1174 or MT1186)  
[MN3127 Organisation theory: an interdisciplinary approach](#) (MN1178)<sup>4</sup>  
[MN3141 Principles of marketing](#) (MN1178)<sup>4</sup>
- 9 *One 300 course from [Selection group E](#)*
- 10 *One 300 course from [Selection group M](#)*
- 11 *One 200 or 300 course from Selection groups [E](#) or [M](#)<sup>5</sup>*
- 12 *One 100, 200 or 300 course from any [Selection group](#)<sup>6</sup>*

### Notes

- Unit Number at the Head of Unit Name
- Prerequisites in the bracket
- Final selection of the options offered is at the discretion of the college

# Selection Groups

## List of courses available in selection groups

Prerequisites and co-requisites for courses only apply to degree students. Prerequisites are given in the text within brackets after the course name. The prerequisites must be passed before the course may be attempted. Co-requisites must be attempted before or at the same time as the course.

Prerequisites, co-requisites and exclusions are outlined in these Regulations, and further details are given under the individual syllabuses which can be accessed by clicking on the course names.



### Level 100 Courses

#### Selection group F1

AC1025	Principles of accounting
DV1171	Introduction to international development
▲EC1002	Introduction to economics
FN1024	Principles of banking and finance
GY1009	Human geography <sup>1</sup>
IR1011	Introduction to international relations
IR1034	World history since 1945
IS1060	Introduction to information systems
IS1168	Introduction to computer systems architecture and programming
IS1181	Digital infrastructures for business
MN1178	Business and management in a global context
MT105A	Mathematics 1 (half course)
▲MT105B	Mathematics 2 (half course)
MT1173	Algebra
MT1174	Calculus
MT1186	Mathematical methods
PS1130	Introduction to modern political thought
PS1172	Introduction to political science
SC1179	Contemporary sociology in a global age
SC1185	Reading social science <sup>2</sup>
ST104A	Statistics 1 (half course)
▲ST104B	Statistics 2 (half course)

#### Selection group F2

LA1010	Criminal law
LA1020	Public law
LA1031	Legal system and method
LA1040	Contract law

### Level 200 and 300 Courses

#### Selection group A

AC2091	Financial reporting (AC1025)
AC2097	Management accounting (AC1025)
AC3059	Financial management (AC1025)
or FN2190	Asset pricing and financial markets <sup>1</sup> (EC1002) + (MT105A or MT105B or MT1174 or MT1186)
AC3093	Auditing and assurance (AC1025)
AC3143	Valuation and securities analysis (FN1024 + AC1025)
AC3193	Accounting theory (AC2091 + AC2097)
FN2191	Principles of corporate finance <sup>1</sup> (EC1002) + (MT105A or MT105B or MT1174 or MT1186)
▲FN3142	Quantitative finance (EC2020 + EC2066)

#### Selection group B

AC2091	Financial reporting (AC1025)
AC3093	Auditing and assurance (AC1025)
AC3143	Valuation and securities analysis (FN1024 + AC1025)
FN2029	Financial intermediation (FN1024)
FN2190	Asset pricing and financial markets <sup>1</sup> (EC1002) + (MT105A or MT105B or MT1174 or MT1186)
FN2191	Principles of corporate finance <sup>1</sup> (EC1002) + (MT105A or MT105B or MT1174 or MT1186)
▲FN3023	Investment management (FN1024)
▲FN3142	Quantitative finance (EC2020 + EC2066)

### Selection group D

DV2192	Poverty and development
or GY2109	Geographies of development <sup>1</sup>
DV3162	Complex emergencies and humanitarian responses
DV3165	Development management
DV3166	Global environmental problems and politics (DV1171 or GY1009 or IR1011 or SC1179 or PS1172)
EC3044	Economics of development (EC2065) + (EC2066 or MN2028)
SC3057	Social policy <sup>1</sup>
SC3160	Population and society <sup>1</sup>

### Selection group E

▲EC2020	Elements of econometrics (EC1002) + (ST104A) + (MT105A or MT1174 or MT1186)
EC2065	Macroeconomics (EC1002) + (MT105A or MT1174 or MT1186)
EC2066	Microeconomics (EC1002) + (MT105A or MT1174 or MT1186)
EC2096	Economic history since 1900
EC3015	Economics of labour (MN2028 or EC2066)
EC3016	International economics (EC2065) + (EC2066 or MN2028)
EC3022	Public economics (MN2028 or EC2066)
EC3044	Economics of development (EC2065) + (EC2066 or MN2028)
EC3099	Industrial economics (MN2028 or EC2066)
EC3115	Monetary economics (EC2065)
EC3120	Mathematical economics (EC2066) + (MT105A + MT105B or MT1174 or MT1186)
FN2190	Asset pricing and financial markets <sup>1</sup> (EC1002) + (MT105A or MT105B or MT1174 or MT1186)
FN2191	Principles of corporate finance <sup>1</sup> (EC1002) + (MT105A or MT105B or MT1174 or MT1186)
GY2164	Economic geography <sup>2</sup>
IR3026	International political economy (EC1002 or IR1011)
MN2028	Managerial economics (EC1002) + (MT105A or MT1174 or MT1186)
MT3095	Further mathematics for economists (MT105A + MT105B or MT1174 or MT1186)

## Level 200 and 300 Courses (continued)

### Selection group G

DV3162	Complex emergencies and humanitarian responses
DV3165	Development management
GY2109	Geographies of development <sup>1</sup>
GY2164	Economic geography <sup>1</sup>
SC3160	Population and society <sup>1</sup>

### Selection group IR

DV2192	Poverty and development
DV3162	Complex emergencies and humanitarian responses
DV3165	Development management
DV3166	Global environmental problems and politics (DV1171 or GY1009 or IR1011 or SC1179 or PS1172)
IR2084	Nationalism and international relations (IR1011)
IR2085	International organisations (IR1011)
IR2137	Foreign policy analysis (IR1011)
IR3026	International political economy (EC1002 or IR1011)
IR2083	International political theory (IR1011)
IR3140	Security in international relations (IR1011)

### Selection group IS

IS2062	Information systems development and management (IS1060 or IS2136)
IS2136	Information systems and organisations <sup>1</sup>
IS2138	Information and communication technologies: principles and perspectives (IS1060) + (IS1168 or IS1129)
IS2182	Innovating digital systems and services (IS1060) + (IS1181 or IS1168)
IS2184	Information systems management
IS3139	Software engineering: theory and application (IS2062 + IS2138)
IS3159	Research project in digital innovation (IS2182) or (IS2062 + IS2138)



IS3167	Management and innovation of e-business
IS3183	Management and social media (MN1178)

### Selection group L

LA2001	Tort law
LA2002	Equity and trusts
LA2008	Administrative law
LA2017	Commercial law (LA1040)
LA2019	Family law
LA2024	EU law
LA2029	International protection of human rights
LA3003	Property law
LA3004	Civil and criminal procedure
LA3005	Jurisprudence and legal theory
LA3007	Evidence
LA3013	Public international law
LA3014	Conflict of laws
LA3018	Labour law
LA3021	Company law
LA3025	Criminology
LA3026	Intellectual property (LA1040)
LA3028	Introduction to Islamic law

### Selection group M

AC3059	Financial management (AC1025) or
FN2190	Asset pricing and financial markets 1 (EC1002) + (MT105A or MT105B or MT1174 or MT1186)
AC2097	Management accounting (AC1025)
DV3165	Development management
FN2191	Principles of corporate finance <sup>1</sup> (EC1002) + (MT105A or MT105B or MT1174 or MT1186)
IS2136	Information systems and organisations <sup>2</sup>
IS2184	Information systems management

IS3167	Management and innovation of e-business
MN2177	Core management concepts (MN1178)
MN3027	The law of business organisation
MN2028	Managerial economics (EC1002) + (MT105A or MT1174 or MT1186)
MN2032	Management science methods (ST104A) + (MT105A or MT1174 or MT1186)
MN3075	Human resource management (MN1178) <sup>3</sup>
MN3119	Strategy (EC1002) + (MT105A or MT1174 or MT1186)
MN3127	Organisation theory: an interdisciplinary approach (MN1178) <sup>3</sup>
MN3141	Principles of marketing (MN1178) <sup>3</sup>
MT2076	Management mathematics (ST104A) + (MT105A or MT1174 or MT1186)
SP2079	Elements of social and applied psychology
ST3188	Statistical methods for market research (ST104A)

### Selection group S

LA3005	Jurisprudence and legal theory
LA3025	Criminology
SP2079	Elements of social and applied psychology
MN3127	Organisation theory: an interdisciplinary approach (MN1178) <sup>1</sup>
SC2145	Social research methods (SC1179) <sup>2</sup>
SC2163	Sociological theory and analysis (SC1179) <sup>2</sup>
SC3057	Social policy <sup>2</sup>
SC3144	Historical sociology <sup>2</sup> (SC1179)
SC3160	Population and society <sup>2</sup>







# Royal Holloway

Royal Holloway was founded in 1886, the grand opening ceremony of which was presided over by Queen Victoria is one of the University of London's six largest Colleges and is home to about 9,000 undergraduate students from over 100 different countries. It is one of only a few colleges nationally that is allowed to use the 'Royal' title.

At Royal Holloway we bring together talented students in departments where academic staff are working at the frontiers of their subjects. Through top-class research, international networks and conferences, we are advancing knowledge and serving society in many different ways.

Royal Holloway is a powerful force in the region, building partnerships with the business community and playing a major role in economic success. Royal Holloway is an innovative and forward-looking place. Today the College maintains the pioneering spirit of the founders in a fast-moving world, and global network of alumni is a legacy of the wealth of opportunities this College continues to provide.

Successful managers are required to undertake many different roles. To be ready for these challenges, you will have to acquire an intellectual understanding and a wide variety of personal skills. You will earn new perspectives and be encouraged to think both critically and creatively. Our curriculum will provide you with the opportunity to work with and learn from students across the world with similar aspirations to your own. The major areas of business administration are covered: human resources, marketing, international business.

You will therefore gain the breadth of knowledge essential to a degree in business administration and as you progress through the programme you will have the opportunity to acquire expertise within chosen specialization, including marketing, human resources and international business. We consider these courses to be a vital part of any aspiring manager's programme of study. Studying as a student is very rewarding, but also very demanding. It requires a major commitment on your part.

You will have to work hard, but the end result is well worth the effort. Taken as a whole, this programme guarantees broad and relevant experience for business administration students and future entrepreneurs. As you begin to travel through our programme, you will begin to understand how the experiences, insights and attitudes you develop during your time on the programme will help advance your career in the



years to come. We are pleased to welcome you as an international student.

Royal Holloway's gives high priority to original research in international business, and the deep understanding of the subject that follows is reflected in its teaching of business and management studies. All staff members are active researchers, and the publication of their findings in books and articles is a key part of their professional work.

In developing the BSc in Business Administration (BBA) degree programmes, the College has drawn on its experience in providing undergraduate programmes and of providing executive development and education. The College has a long history of working with managers in industry, gained through running management development courses for many well-known companies. Central to the College's educational method is the study of different organisations and practices in different countries and at different periods. This comparative perspective is particularly appropriate to the challenges faced by modern business and management education in a rapidly changing environment.

## Member Institution : Royal Holloway

Academic direction for all of the courses offered through the University of London is provided by Colleges of the University. Academics at these Colleges develop the syllabus, prepare the study materials and are responsible for the assessment of the students. This means that students benefit from the academic rigour and leading-edge research undertaken by the College. It also ensures that the standard of award made to students is maintained at the same level as the standard of award to students studying at one of the Colleges of the University.

On successful completion of their studies, students are awarded a University of London degree. The final diploma they receive shows they were registered with the University of London and awarded a University of London degree. It also gives the name of the University of London College that conducted the examination.

[www.rhul.ac.uk](http://www.rhul.ac.uk)

# Admission Eligibility for Royal Holloway

## Eligibility

### Minimum Age

## Degree Route (min. 3 years)

Normally at least 17 years in the year of registration

## Certificate in Higher Education (Cert HE)

Normally at least 17 years in the year of registration

## Entrance Requirements

### UK System and English requirement

To be eligible for the Standard Route of one of the degrees you must :

Have either passes in: Two subject passes at GCE 'A' level, plus at least three further subjects at GCSE/GCE 'O' level at grade A - C

OR

Three subject passes at GCE 'A' level and one further subject at GCSE/GCE 'O' level at grade A - C

OR

Two subject passes at GCE 'A' level, plus two further subject passes at GCE 'AS' level. Either one of these A levels must be passed at grade A – D or both AS levels must be passed at grade A - D

- One 'A' level and 4 GCSEs levels (or equivalent); OR 6 GCSEs (or equivalent)
- GCSE grades should be A to C and meet the entry requirements in English language proficiency. 'A' level grade A - E



### IB Diploma and English requirement

Successfully pass IB DIPLOMA



### Indian System and English requirement

Year XII, All India Boards or Recognised Year XII State Board - 4 Acceptable Academic subjects each passed at 70 % or above  
OR

An overall average of 70% from all subjects at Year XII.

Applicants require an Acceptable Test of Proficiency in English which has been passed at required grade within past 3 years.

Applicants who have studied through the medium of English are exempt from a Test of Proficiency in English.



# Why study BSc in Business Administration (BBA) with Royal Holloway

## BSc in Business Administration

We are pleased to announce the 2 + 1, where students can apply to study at Royal Holloway for their final year of studies. The conditions around this are that student need to have achieved an average of 60% or higher across stages 1 and 2 (or stage 2 only if APL has been given for stage 1) and satisfactory references and personal statements. Such transfers are assessed on a case by case basis by the BSc Business Administration Programme Director and the on-campus Director of Under Graduate Studies. Students will need to have been registered on the new programme for at least one year before applying for the 2 + 1.

The overall aims of our undergraduate programme are to:

- provide an intellectually challenging and relevant education for students intending to pursue management and professional careers or considering further study or research
- combine academic and practical insights into the subject of management within an international and comparative context
- reflect the changing needs of society and students, and influence developments in management studies
- provide a learning environment informed by the research expertise of academic staff
- develop lifelong learning skills and a broad range of transferable personal and technical skills
- offer a progressive structure through which students move from foundation courses to more critical or specialist courses while maintaining a flexible set of options.

### Programme Learning Outcomes

#### A. Knowledge and Understanding

1. The discipline of Management with an emphasis on the historical, political, cultural, ethical and institutional forces shaping modern business
  - 1.1. The principal interdisciplinary and comparative perspectives that inform Management theory and practice
2. How organisations develop and maintain competitive advantage within a changing business environment influenced by economic, political, social and cultural factors
  - 2.1. Contemporary perspectives on the global economy and multinational enterprise
3. The organisation, its functions, and the context of business leading to a multifaceted appreciation of international business and Management discipline
  - 3.1 The strategic and operational process by which management plans and coordinates the use of international management resources with the general objective of securing or maintaining competitive advantage
  - 3.2 The emergence of the global economy and multinational firms, using various theoretical approaches (economic management, international relations and geo-political)
  - 3.3 Contemporary perspectives on emerging and developed markets with a focus on Asia-Pacific and European contexts

#### B. Intellectual (thinking) skills

1. Ability to evaluate theory, research and practice within management
2. Capacity to critically apply methodologies in the analysis of management
3. Ability to analyse real-life problems facing actual businesses and evaluate the effectiveness and limitations of different management attempts to stop them

#### C. Transferable skills

1. Research
2. Self-management
3. Problem solving
4. Numeracy
5. Netiquette
6. Written communication

### Programme scope

The courses you are offered within the BSc Business Administration degree reflect the aims we have outlined so far. Those aims are embodied in an organisational structure that we will now explain. (You should consult the Programme Specification and Regulations for more details on how this structure works in practice.) The BSc Business Administration degree is a 'courses' degree. This means that it is constructed on a modular basis, the overall syllabus being divided into constituent courses. Each course that you take is given a value, and at each level of study you take four courses of different types and complexity. Over your time of study of 3 years you must take and enter exams for the equivalent of 12 full courses. Only marks for courses taken

at the Advanced and Specialist levels of study count towards your final Honours Class but you must pass a minimum of nine courses in order to graduate. Courses taken during Specialist level are more heavily weighted, in order to reflect and reward your progress. Students can progress to the Advanced Level once they have passed the equivalent of two full courses at Foundation Level – but in order to progress to the Specialist Level they must have passed the equivalent of two full courses at Advanced Level **AND** attempted any remaining courses from Foundation Level.

## Levels, Courses and Assessment

The main course types in the BSc Business Administration degree are as follows:

### Foundation level

The Foundation level courses are designed to take account of the different levels of understanding among the student body. They will provide you with knowledge of basic concepts, and the tools and techniques you need to employ both as a student and, in the future, as a manager. You will be positively encouraged to acquire the skills and competencies necessary for the development of your creative and decision-making capabilities. We encourage independent thinking and learning and, within our programme of courses, you will have as much freedom as possible for self-expression. The courses taken at Foundation level are designed to introduce you to the methods of approach and skills used in the study of business administration at university level. They cover a number of aspects of business administration and academic study, from the study process, through accounting and statistics to the historical development of business and management theory, organisation studies and communication skills.

### Advanced level

The Advanced level courses are designed to build on the core business management knowledge that you gained at Foundation level and extend your in-depth study of business to the creation of corporate strategy and the functional areas of business practice. You will extend your knowledge of and competence in core areas of business, such as human resource management (HRM), marketing and accounting. At the Advanced level you have some choice as to the topic areas you wish to pursue. If you intend to take particular. The courses taken at Advanced level covers strategic management and introduces the functional areas of business management in detail.

### Specialist level

The Specialist level is the most intensely challenging and also the most interesting of the programme. As you begin the Specialist level courses, you will experience the detail of business and management activity. These courses are heavily informed by the research carried out in the School of Management at Royal Holloway, and reflect contemporary thought on business from our own and international management scholars. At this level you are presented with the choices over the courses you follow and can take the opportunity to enhance your expertise in one specific area of business activity or opt for slightly more breadth. The core course at this level is Modern Business in Comparative Perspective which provides an in-depth comparison of differing national business cultures. Other courses at this level allow the student to take an in-depth approach to a number of specific business areas and functions.

### Assessment

**Assessment for each course is done by 40% assignment / course work and 60% written examination for all the three years.**

## Programme Structure

To complete the degree you must study a combination of courses and half courses that add up to the equivalent of 12 whole courses. You can study the general BSc Business Administration degree in General Route or you can specialise in one of the following three areas:

- **Marketing**
- **Human Resource Management**
- **International Business**

If you choose to follow one of the specialist routes, your degree title will reflect that specialization, for example, BSc Business Administration with Marketing. In either case you will be introduced to the core concepts of business administration and management through your Foundation level courses. At the same time you will be learning the key study skills required for university level work and will be learning the statistical and communication techniques that are core to both student and managerial activity. As you progress to the Advanced level courses you will begin to look in-depth at a number of areas of business functioning. The Specialist level provides the arena within which you are able to develop an expert level of knowledge in one particular area, or to deepen your knowledge of two aspects of business administration that you followed at the Advanced level.

# Pathways through the Degree

## BSc Business Administration (General Pathways)

### Foundation level (four courses) (compulsory subjects)

#### Compulsory subjects

BA1510	Foundations of quantitative methods for sustainable organisations
BA1520	Interpreting Management, Market and Consumption
BA1530	Information Systems and Organisation Studies
BA1540	International Business and Accounting

### Advanced level (four courses)

#### Compulsory subjects

BA2510	Employability and Human Resource Management
BA2520	Strategic Management and Accounting
BA2530	Operations Management and Marketing Strategy

#### Choose any one from the following:

BA2540	Managing Organisational Change and Performance
BA2550	Marketing Research and Digital Marketing
BA2560	The Global Economy and Multinational Enterprise

### Specialist level (four courses)

#### Compulsory subject

BA3510	Integrating Management: Business, Leadership and Innovation
--------	---

#### Choose any three from the following:

BA3520	Consumer Behaviour and Global Marketing
BA3530	Brands, Branding and Advertising
BA3540	International Human Resource Management
BA3550	The Individual at Work and Globalisation
BA3560	Emerging Markets and Asia Pacific Business
BA3570	European Business and International Competition

## BSc Business Administration with Marketing

### Foundation level (four courses) (compulsory subjects)

#### Compulsory subjects

BA1510	Foundations of quantitative methods for sustainable organisations
BA1520	Interpreting Management, Market and Consumption
BA1530	Information Systems and Organisation Studies
BA1540	International Business and Accounting

### Advanced level (four courses)

#### Compulsory subjects

BA2510	Employability and Human Resource Management
BA2520	Strategic Management and Accounting
BA2530	Operations Management and Marketing Strategy
BA2550	Marketing Research and Digital Marketing

### Specialist level (four courses)

#### Compulsory subject

BA3510	Integrating Management: Business, Leadership and Innovation
BA3520	Consumer Behaviour and Global Marketing
BA3530	Brands, Branding and Advertising

#### Choose any one from the following:

BA3540	International Human Resource Management
BA3550	The Individual at Work and Globalisation
BA3560	Emerging Markets and Asia Pacific Business
BA3570	European Business and International Competition

## BSc Business Administration with Human Resource Management

### Foundation level (four courses) (compulsory subjects)

#### Compulsory subjects

BA1510	Foundations of quantitative methods for sustainable organisations
BA1520	Interpreting Management, Market and Consumption
BA1530	Information Systems and Organisation Studies
BA1540	International Business and Accounting

### Advanced level (four courses)

#### Compulsory subjects

BA2510	Employability and Human Resource Management
BA2520	Strategic Management and Accounting
BA2530	Operations Management and Marketing Strategy
BA2540	Managing Organisational Change and Performance

### Specialist level (four courses)

#### Compulsory subjects

BA3510	Integrating Management: Business, Leadership and Innovation
BA3540	International Human Resource Management
BA3550	The Individual at Work and Globalisation

#### Choose any one from the following:

BA3520	Consumer Behaviour and Global Marketing
BA3530	Brands, Branding and Advertising
BA3560	Emerging Markets and Asia Pacific Business
BA3570	European Business and International Competition

## BSc Business Administration with International Business

### Foundation level (four courses) (compulsory subjects)

#### Compulsory subjects

BA1510	Foundations of quantitative methods for sustainable organisations
BA1520	Interpreting Management, Market and Consumption
BA1530	Information Systems and Organisation Studies
BA1540	International Business and Accounting

### Advanced level (four courses)

#### Compulsory subjects

BA2510	Employability and Human Resource Management
BA2520	Strategic Management and Accounting
BA2530	Operations Management and Marketing Strategy
BA2560	The Global Economy and Multinational Enterprise

### Specialist level (four courses)

#### Compulsory subjects

BA3510	Integrating Management: Business, Leadership and Innovation
BA3560	Emerging Markets and Asia Pacific Business
BA3570	European Business and International Competition

#### Choose any one from the following:

BA3520	Consumer Behaviour and Global Marketing
BA3530	Brands, Branding and Advertising
BA3540	International Human Resource Management
BA3550	The Individual at Work and Globalisation

## Frequently asked Questions

### Why study with the University of London ?

The University of London is one of the world's leading academic institutions. It is internationally recognised as a centre of excellence for its teaching and research.

It is an opportunity for students to receive a University of London degree without having to move to London, either for teaching support or for the examinations. The degrees offered are spread over and combine a wide range of disciplines like Economics, Management, Finance and Social Science. The curriculum is international in scope and highly valued - graduates transfer to Masters Programmes in Australia, the USA and the UK.

### What is the relationship between the London School of Economics and Political Science (LSE) and the University of London (UOL)?

The University of London founded by the Royal Charter in 1836 is one of Britain's largest universities and is a federation of Colleges and Institutes. The London School of Economics and Political Science - 'LSE' in short - is one of the teaching institutions that make up the University of London. Further, the highly reputed LSE is a designated Member Institution for the University of London.

### What is the relationship between London School of Economics & Political Science and Russell Square International College?

The London School of Economics and Political Science (LSE) is the Member Institution for the suite of undergraduate degrees in the subject areas of Economics, Management, Finance and Social Sciences. The academic direction and support for these programmes is provided by LSE, although the University of London grants the final Award. RSIC is a recognised teaching centre of the University of London. Students enrolled at RSIC for registration with University of

London and will have contact with the University of London only on all matters of administration from registration to Graduation. LSE sets the syllabus, provides subject guides, prescribes the essential and reference texts, sets the examination papers and marks the final examinations.

### What is the difference between a correspondence course and the UOL's distance learning programme offered at RSIC?

Unlike a correspondence course, the Degree of the UOL offered at RSIC is structured on the lines of a regular college teaching pattern, with daily classes, regular evaluation, frequent parent teacher interactions and an annual academic calendar. RSIC also provides an opportunity to its students for extra curricular activities ensuring a holistic and interactive campus life. For e.g., RSIC has an active Students' Council that initiates various activities all through the year.

### Will an international student achieve the same academic standards as the regular students studying at London?

The students achieve exactly the same internationally recognised academic standing as those who study full-time at a college / institute of the University of London. Examination papers are set and marked by the same academics of the University of London and to exactly the same standards that assess the full-time college-based students studying at London.

### Why are the degrees called BSc degrees? Do I have to study natural science subjects too?

The Degrees are called BSc Degrees because they emphasize on the scientific approach to knowledge. No, you do not have to study natural science subjects but you will have to study Mathematics if your particular Degree requires you to do so.



### What documents will I receive when I graduate?

When you graduate, you are awarded a University of London degree. The final parchment includes the University of London logo and signature of the Vice-Chancellor, and indicates which University of London Member Institution conducted your examinations.

The Diploma Supplement will describe the nature, level and content of the programme you successfully completed and include a transcript of courses taken and marks achieved, as well as the overall classification. It also provides further information about the role of the Member Institution and method of study. It explains that there is no difference between the standards of Awards, whether they are regular University students or Recognised Teaching Centre students.

### I hear that the UOL Degree is tough? Will I be able to cope?

The UOL Degree, like any other high quality International degrees is challenging. With regular attendance, consistent study and a strong motivation, all our students at RSIC have done us proud by doing well in their courses.

### When and where will my final examinations be conducted?

Final examinations will be conducted by the British Council, in Mumbai in the month of May. All examinations, no matter where they are taken, are marked in London. Examinations are of the same standards as those taken in London at one of the University's constituent Colleges.



### Can I pursue a local degree along with the UOL degree?

Yes, provided you can meet the attendance and course work requirements of RSIC.

### What can I do after my Degree from the UOL?

You could apply for post graduate programmes in the U.K, provided you meet the entry requirements for the university of your choice. You can also apply to other International Universities that recognise the programme. These Degrees prepare you for a wide range of careers including management consultancy, accountancy, banking, and general management in the private and public sectors.

### UOL - Scheme of Award?

A University of London Degree is a prestigious qualification that you can be proud of and signals that you have achieved globally recognised standards. Boundary marks are set to indicate standards and should not be read as indicating that a student has made a certain number of points.

You need to achieve five first class marks (70 and above) to gain a first class honours degree, or four first class marks and an aggregate of 590.

The content of the examinations, and the rigour of the assessment ensures adherence to our high standards.

### Virtual Learning Environment (VLE)

A resource, available from September 2008, VLE is a one stop place for all the resources you need during the programme. All units have an area on the VLE, grouped discipline. The resource contains all reading lists, unit information sheets and links to exam resources, includes all chapters of Subject Guides.

**You can listen to** recorded messages from LSE academics LSE and key staff at the University of London. You can **discuss** by participating in forums, where you can chat online with other students who are studying the same units. **You can test yourself** on some of the key units through quizzes, activities and solutions available on VLE.





## Testimonials

### Ria Vardhan - BSc Banking and Finance

Russell Square International College presents the opportunity to pursue some of the most sought-after undergraduate courses in the world, laying the foundation for academic and professional success alike. Since the strength of the college is small, it has a high teacher-to-student ratio, that helps students stand-out in such challenging courses. I completed the first two years of my BSc Banking and Finance degree here



and have received an offer to finish my final year at LSE through the General Course. This wouldn't have been possible without the immeasurable efforts of my educators. Even though I will be moving, I will always be grateful to RSIC.

### Fia Bhanji - BSc Economics and Management

My main attraction in pursuing a degree from University of London (UOL) was the name 'LSE' that was involved with it. For an economics lover like myself, this course gives a comprehensive understanding of economics and all its branches.

A rigorous foundation is set after which one is free to specialize. What sets it apart from other courses is that it gives a certain level of international exposure and expertise. It has facilitated the enhancement of my questioning and communication skills that will hopefully be valued by my future employers.



The most important thing I learnt in this course of economics (and management) is to think differently. Not to take anything 'as a given' without doing my own exploration, and this I feel is helpful not only in professional but also in personal life.

### Sneh Patel - BSc Business Administration

I would like to thank Russell Square International College for providing University of London courses in Mumbai and I'm glad to be a part of this institution.

Being a full-time UK student at the University of Leeds, I have figured that when you say that you have graduated from the University of London, regardless if its LSE or BBA, it holds a very good value. I feel I made the right choice to study at Russell Square.



I got a special invitation to meet with Her Royal Highness, Anne Elizabeth, The Princess Royal. I can't even dream about meeting anyone from the royal family of the United Kingdom. We can all learn to choose. As we live our lives, we can all learn to choose, NOT TO PROVE but to improve.

### Aditya Pai - BSc Economics and Management

I knew from the start that I wanted to study Economics and Management, partly because I studied Economics in my IBDP but mainly because I really enjoy the unpredictability of it all. It's a huge challenge to always stay on your toes, be flexible and ready to react to the business environment, but I love nothing more than a good challenge! I chose University of London at Russell Square International College, because of its UOL Accreditation and I am more than happy with my choice.

A big plus point of RSIC is that it provides a good academic environment to study in. We get to do lots of our own reading and research, though of course we get plenty of support and the lecturers are available if you need extra guidance. It challenges you to really improve your time management and critical thinking - essential transferable skills for the workplace.

I enjoy the various business-related games and challenges that form part of many modules as it makes the content more relevant and engaging. The skills and knowledge we develop are also incredibly transferrable and applicable to today's business environment. In the past I have quite often used course material during interviews and assessment centres which I feel has given me the edge over other candidates.

Post my days at RSIC, I came to the UK. RSIC's UOL course enabled me to get a scholarship to pursue my Masters in UK. Currently, I am working at 4C Associates, a consulting firm in London, UK. RSIC has helped to mould me in many ways, and it prepare me to step into the real world. The capabilities I've developed over the course of my degree are exactly what employees are looking for in a graduate. This includes a whole variety of skills ranging from presenting, critical thinking and teamwork.

Beyond all this, RSIC provides a student with a great friendly environment to learn and fun in. Teachers are more than just capable, I made some great friends, and most importantly had a great time during the three years that I spent at RSIC.



I would like to take this opportunity to thank the management and teaching faculty, who made the RSIC experience one I will never forget.



### Shubham Dharnidharka - BSc Banking and Finance

I took admission in the year 2013 for the BSc Banking and Finance program from LSE. I can positively say Russell Square International College has made me a better person.

It has helped me develop a positive attitude towards my studies and discover more about myself. Teachers are very caring and interested in students' well-being. They make sure every class is fun, educational and interactive. The classes being small here help the teachers to concentrate more on each and every student. They do not hesitate in giving extra time after classes to students.



The college organises events with the help of students which give the students various kinds of exposure. Definitely a very good choice to join RSIC.

### Kushal Doshi - BSc Banking and Finance - MSc in International Business from Aston Business School

My experience at RSIC cannot be penned down. I had dreamt of studying abroad after my higher secondary education but because of family pressures I was unable to do so and just then RSIC happened. And I am glad it did, and I don't regret my decision of staying back here in India and studying further at that point of time.

This college has given me a good international based education. The intense program has provided me the knowledge and skills required to work as a professional with the ability to match the best protocols of the world. This program has strengthened my educational base. Moreover it has given me the global perspective which has been an integral part of my overall development which I would not get from any Indian degree.



Besides education, we have received many opportunities for overall development through enormous extra curricular activities. I will never forget the football matches. Also I need to mention our participation in various inter college fests and various dance shows. All this has been a wonderful experience.

### Naiya Patel - BSc Economics & Management

Thinking about three years at Russell Square International College reminds of myriad of memories that made 365x3 days just fly. As most people say my undergraduate Experience was one which has ingrained my personality with qualities like determination and perseverance.

The feeling one has of being a University of London student is one of pride and privilege. Russell Square International College being an affiliated centre further enhances this feel by making us more exposed to the international nature of the course. The fact that delegates like Dr. Keith Sharp, the director of UOL (LSE), visit Russell Square International College itself allowed us to directly contribute our views about the course and the problems we as international students face. At Russell Square International College, I have been able to learn under the guidance of some of the best teachers I ever had and have made friends for life. My experience here has been life Changing, allowing me to be a balanced and thoughtful individual.



### Enayat Marwaha - BSc Business and Management

I joined RSIC in 2016 for the BSc Business and Management course. At first the course seemed overwhelming and intensive however, with remarkable advice and support from the faculty I was able to cope and in fact perform extremely well scoring a 1:1 in my first year, which I did not expect. I then went onto applying for the general course offered at LSE and received an offer. I decided to go for my third year to LSE. My first two years at Russell were extremely exciting and enjoyable with a fair share of hard work. I am currently studying FM212 Principles of finance, GV101 Introduction to Politics, MG301 Strategy, MG213 Human Resource Management and MG213 Information Systems at LSE. Russell gave me the opportunity to unveil my true potential and capitalize on my capabilities for which I will always be grateful. In the future I plan to specialise in Luxury Brand Management.



### Ahmad Khan - BSc Business

Putting pen to paper on three of the most crucial years of my academic life isn't the easiest thing to do. After having done two years of IB, I was already familiar with the international education system and was headed to either the UK or USA to pursue my further education. However, not being the most serious and decisive student, I didn't make the score I needed to get into a few universities I had planned on going to. So with time lapsing and me indecisive on what I wanted to do, I heard of RSIC from a friend. On visiting the college for counseling and my interview, I realized that there was a lot more being offered that what I fathomed. An international education, a well-recognized global degree from UOL and great faculty, without leaving my city is quite dreamy. To be honest, I joined this institution with a very casual approach, all of eighteen, carefree and quite immature. One of my major problems was being punctual, which was one of the reasons I missed what was going on in class. However, as time passed, I realized the importance of being more decisive and adopting a relatively serious approach towards things. Having cleared only 3 out of 5 units in the first academic year, I put a lot of pressure on myself for the second year. Shiver me timbers! However, there were a few members of the faculty that understood me as a person and molded the student in me into a more attentive and confident person. Their role stretched way beyond the classroom and became guardians of my best interests. Gradually, my attitude towards work adopted a more serious, confident and decisive character and my performance improved. Three years passed like a gush of wind and the tides of time molded me into a better learner. From being a carefree, indecisive and less focused student, I now have a different way of doing things. This institution not only offers students an opportunity to gain international education but also helps develop students in the best way possible and get them a step closer to their dreams.



I would highly recommend this course to students willing to take the challenge and plunge into the world of international education. I consider the UOL as one of the most challenging and beneficial academic environments.

### Prithvi Patel - BSc Economics and Management

RSIC has been a spectacular journey for me. The three years I spent here studying BSc Economics and Management have helped me in further pursuing my Masters in Strategic Marketing Management from Aston University, followed by starting my own business in the media industry. Not only did the challenging curriculum



help me grow, but it was the people I met in this college that played a major role in my life and will continue to do so. Lastly, the staff, which is the main asset of this college, has been on its toes all the time and provided a helping hand to all the students whenever required.

### Pulkit Dhawan - BSc Business Administration

RSIC holds a special place in my heart, as this where I went through a lot of lifelong memories and learnings. Studying at RSIC was a unique experience as a whole, both in academic and personal terms. We were able to get access to international curriculum in India, which broadened our understanding in the fields we studied in. Also having small batches in RSIC, we were given a greater chance for one to one interaction with our professors, which enabled us to clarify our doubts instantly. RSIC also put in a lot of effort in ensuring we are taught by a very professional and friendly faculty with whom we could open up and create a very positive atmosphere in the classrooms. RSIC also



conducted a lot of extracurricular activities such as industrial visits, football tournaments and cultural fests, which were always awaited every year. Not just me, but all the lifelong friends I made at RSIC would share the same experience as me of our 3 years at RSIC.

### Seimonee Fernandes - BSc Business and Management

My experience at Russell Square International College was the startup to something much bigger. As my second family, RSIC taught me experiences that only helped me grow into this mature person I am today. The faculty has always been impeccable with their teachings, and throughout my three years, have been the most friendly and approachable staff I have come across. They always took out their time to be there for me, not only as professors, but also as a mentors and friends, which is why I am still in touch with so many of them. I studied my BSc. in Business Management, as a foundation to help me understand and grapple with situations that has now enabled me to start my own business, in the field of something that I have always been highly passionate about. I completed my undergraduate degree and went on to pursue my Masters in Creative Writing from the University of Birmingham. The one thing I will cherish throughout my life from this college is the fact that I have some truly amazing, honest and wonderful friends who

have gone on to be highly successful and intelligent people I can count on. There are countless memories and moments that are going to stick with us for years to come. All of us have been shaped by the collegial yet rigorous



environment, that transformed us into who we are today. When I reflect on my three years at RSIC, I conclude that the experience not only made me a better person, but also prepared me in unpredictable ways for my career, and I will be eternally grateful for everything that I have learnt here.

### Chirag Pansari - BSc Business and Management

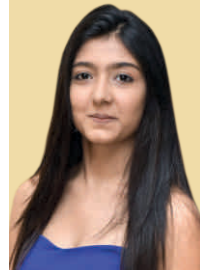
My journey at Russell Square has been amazing. Its a small college so you literally know each and every person and bond really well with them. Not to forget, the faculty here treats you like their own children and serve you accordingly. Since it has a small strength, you are in a way, sitting in your own private tuition which really helps you to pass such a rigorous course. This course is quite difficult but highly knowledgeable. Being an average student myself, it wasn't easy for me to graduate at all but took a lot



of hardship to get through. Today when i compare the person i was and what i've become, i feel an immense amount of change in the knowledge base And this wouldn't be possible at all if was in some local college. Giving up on life in a way and every minute spent was totally worth it. Thank you RSIC.

### Simran Bardai - BSc Business Administration (HRM)

It gives me pleasure to give back something to the institution in the form of a vote of thanks. I give thanks for all the support from the faculty, co-curricular activities and



the facilities provided by the college and administration, which has made me industry ready prospective human resource. These three years in RSIC, have been a real learning experience and I have passed out with various personality enhancements. Thank you for a grateful time at RSIC.

### Hemangi Dharmadhikari - BSc Business Administration (HRM)

Spending 3 years at Russell Square was one of the best decisions of my life. From meeting great people to learning all about international business, RSIC



offered a lot to us students. Over the 3 years that I was there we had many adventures, many learning opportunities that impact our life now. Being here made me acquire a lot of soft skills, skills that help me a lot where I'm employed right now.

# Infrastructure Facilities



# Events

RIFT



Republic Day Celebration



An Interdisciplinary International Conference On Digitization And Beyond

Lecture by Dr. Kishore Kulkarni, MSUD, Dept. of Economics, Denver, USA, on current economic senerio in US



Trip to Rajasthan



Graduation Ceremony



Women's Seminar



Indo-US Summit

ELIXIR Fest

Old Age Home visit



Trip to Germany



Teacher's Day



Orphanage Visit



Christmas Celebrations



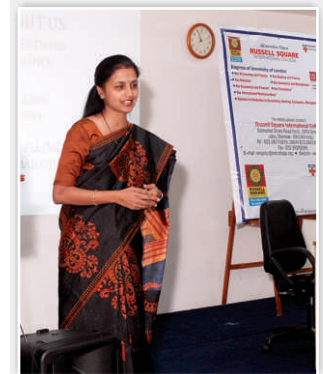
Chandigarh Trip



Manali Trip



Leh Ladakh Trip



Ms. Swati Salunke counselling Students on Unconventional Career Options

### TERMS & CONDITIONS

1. Within 10 days of notification of admission by **Russell Square International College**, the student is expected to pay the admission fee, admission processing fees, security deposit and annual fee to the college.
2. Students must satisfy the conditions laid down by the UOL in relation to attendance and course work assignments.
3. The Application Processing Fees can be paid by Cash / Cheque / Demand Draft in favour of '**Russell Square International College**'.
4. **Russell Square International College** reserves the right to revise the fee structure in future.
5. The security deposit is collected against damage to or loss of library books, computer facilities and other equipment or assets of the college. It will be refunded without interest after adjustment of dues, if any, on completion of the student's studies at **Russell Square International College**.
6. The annual fee at **Russell Square International College** does not include the amount to be paid to the University of London and the British Council.
7. Russell Square International College formulates regulations necessary for the smooth regulations wherever and whenever considered necessary and appropriate. Therefore, this publication and the descriptions contained herein are not to be construed as a contract binding **Russell Square International College** to any specific policies. The information given in the brochure and application material is an indication of **Russell Square International College's** plans on the date of publication of this document.
8. The submission of an application for admission does not guarantee admission.
9. Students will participate in numerous events and activities during the academic year. College reserves the right to use their photographs for marketing activities.
10. UOL Programme Fees are subject to annual revision and typically may be increased by upto 7% per annum.
11. Students must satisfy the conditions laid down by UOL.

**Note:** RSIC is a Recognised Teaching Centre of University of London teaching UG courses academically designed by the LSE and Royal Holloway. The degree is awarded by the University of London, which is highly rated and recognized worldwide. Students aspiring for further studies after completion of graduation, normally join UK/US Universities for PG studies. In India, equivalence has been granted by Universities of Delhi, Kolkata and Mumbai. The RSIC, however, doesn't guarantee or own responsibility for further studies in India or for government employment.

# Admission Procedure

## For Degree Route (min. 3 years)

**Step 1:** To check your eligibility for admission see the table on Admission Eligibility or Contact us:

Call: 022 - 61306161 / 26254297 / 26254298 / 26284666

Fax: 022 - 26283065

Email: [enquiry@rsicollege.org](mailto:enquiry@rsicollege.org)

Russell Square International College

Gulmohar Cross Road No.9, J.V.P.D Juhu, Mumbai 400049.

**Step 2:** Send a Cheque or Demand Draft of Rs.10,000/- (plus taxes as applicable) for selection processing. This fee is non-refundable.

**Step 3:** Fill in the RSIC application form along with :

- 3 passport size photographs.
- Copies of Class X & XII marksheets.
- Copy of Birth certificate/ Passport copy-English.

**Step 4:** Candidates will appear for an interview conducted by college.

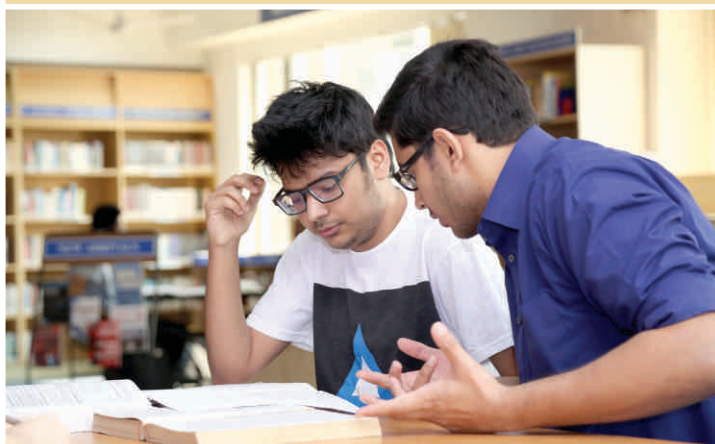
**Step 5:** The selected candidates should pay the RSIC fees within 10 days from the date of intimation of selection.

### Important note for Degree Route students :

As a student, you will also need to apply to the University of London. The University of London application fees and registration fees have to be paid separately and RSIC will coordinate with the UOL on your behalf. Admissions are subject to the approval from the University of London.

### Studying at RSIC :

- RSIC requires compulsory attendance.
- Students must work consistently throughout the year and do all the work assigned.
- In addition RSIC requires an active participation in the extra curricular activities provided such as debates, workshops, industrial visits and college celebrations.





# Fee Structure University of London

Economics, Management, Finance and the Social Sciences (EMFSS)

Member Institution - London School of Economics and Political Science (LSE)

Subject to revision. 2021-2022 Session.

Fee Details: Degree Route, CERT HE and Graduate Diploma	Indian Residents (Rs.)	NRI's / Expatriates (Euros)
**Application Processing Fee	10,000/-	250
**Admission Fee (one time)	1,00,000/-	2,500
Security Deposit (refundable only at the time of leaving)	50,000/-	1,250
Annual Tuition Fees (inclusive of GST)	5,90,000/-	14,750

Cheques / Demand Drafts should be drawn in favour of Russell Square International College.

Students are also required to pay the following fees to the University of London for 2021-22 (subject to revision)

Degrees (Standard Route and the Graduate Entry Route)	Degree
Application Fee (non-refundable)	£107
Registration Fee	£1,146
Examination Fee (per course)	£346
Examination Fee (per half course)	£173
Continuing Registration Fee	£523

CertHE Social Sciences, Diploma in Social Sciences and Diploma in Economics	
Registration Fee	£1,146
Examination Fee (per course)	£346
Examination Fee (per half course)	£173
Continuing Registration Fee	£523

Additional fees payable to the University (where applicable)	
Fee for second and subsequent transfers between EMFSS Programmes	£211
Late registration fee* (non-refundable)	£100

- The British Council administers the annual examinations and their administrative charges are Rs. 2,345/- per paper.
- The University of London and the British Council have reserved the right to amend previously announced fees if necessary.
- Demand Drafts payable to British Council should be drawn in favour of **British Council Division, payable at Mumbai.**
- Online payment in Pound Sterling to be made to University of London
- Currency rates prevailing at the time of payment of fees, will be applicable.
- \*\*GST @ 18% will be applicable on Russell Square International College and University of London fees.
- Fees once paid to Russell Square International College will not be refunded under any circumstances.





# Fee Structure University of London, BSc Business Administration Member Institution - Royal Holloway



Subject to revision. 2021-2022 Session.

Fee Details	Indian Residents (Rs.)	NRI's / Expatriates (Euros)
Application Fee (non-refundable)	10,000/-	250
Admission Fee (One time non-refundable)	1,00,000/-	2,500
Security Deposit (Refundable only at the time of leaving)	50,000/-	1,250
Annual Tuition Fees (non-refundable)	4,90,000/-	12,250

Cheques / Demand Drafts should be drawn in favour of Russell Square International College.

The Programme Fees below refer to the 2021-2022 session and New Regulations only and are effective from 1<sup>st</sup> March 2021.

<b>Bsc Business Administration</b>	
Application fee (non-refundable)	£107
Registration fee	£1,654
Assessment fee per course	£397
Continuing registration fee	£826

<b>CertHE Business Administration</b>	
Registration fee	£826
Assessment fee per course	£397
Continuing registration fee	£826
Transfer from the CertHE to the BSc Business Administration fee (in the year that you pay Transfer Fee, <b>no</b> Continuing Registration Fee payable.)	£1,654

<b>Additional fees payable to the University (where applicable)</b>	
Administrative fee for changing course (per course) (non-refundable)	£211
Application fee for recognition of prior learning per course / half course (non-refundable)	£113
Late registration fee* (non-refundable)	£105

- The British Council administers the annual examinations and their administrative charges are Rs. 2,345/- per paper.
- The University of London and the British Council have reserved the right to amend previously announced fees if necessary.
- Demand Drafts payable to British Council should be drawn in favour of **British Council Division, payable at Mumbai.**
- Online payment in Pound Sterling to be made to University of London
- Currency rates prevailing at the time of payment of fees, will be applicable.
- GST @ 18% will be applicable on Russell Square International College and University of London fees.
- Fees once paid to Russell Square International College will not be refunded under any circumstances.





**For admissions and programme enquiries:**

**Russell Square International College**

Gulmohar Cross Road No. 9, J.V.P.D. Scheme, Mumbai 400049. India

Tel.: +91 22 61306161 / 26254297 / 26254298 / 26284666

Fax : +91 22 26283065

E-mail: [enquiry@rsiccollege.org](mailto:enquiry@rsiccollege.org)

Website: [www.rsiccollege.org](http://www.rsiccollege.org)

**If you have any enquiries, contact us:**

**Our Office hours are:** Monday - Friday: 9:00 am to 6:00 pm

Saturday: 9:00 am to 5:00 pm